



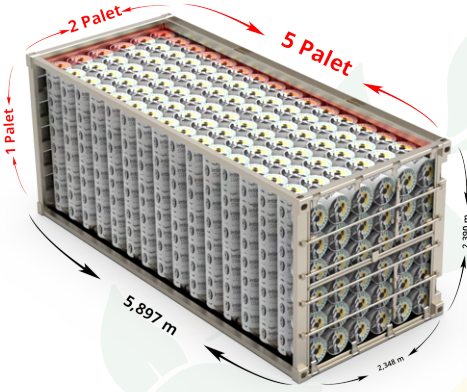
# irritime

## YÜKLEME PLANI

### STAR-T mini MIDI YÜKLEME PLANI

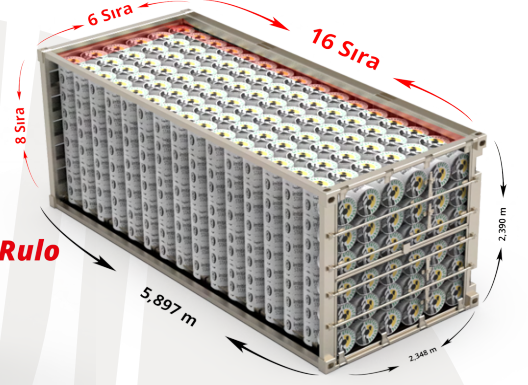
#### PALETLİ

**72 x 10 + 36 = 756 Boru**

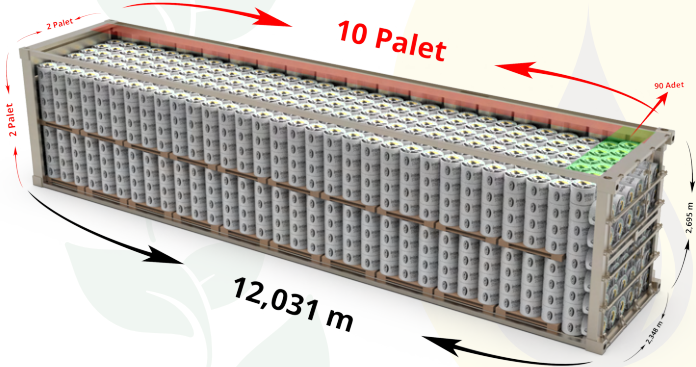


#### PALETSİZ

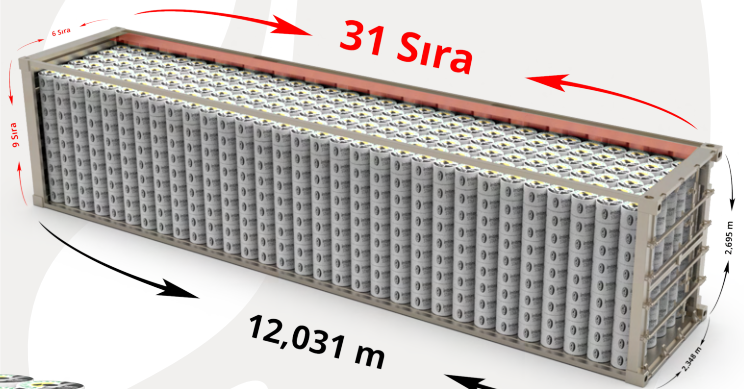
**54 x 15 = 810 Boru**



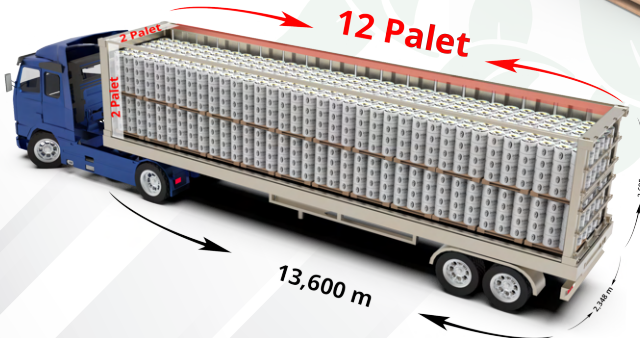
**36 x 40 + 90 = 3.690 Boru**



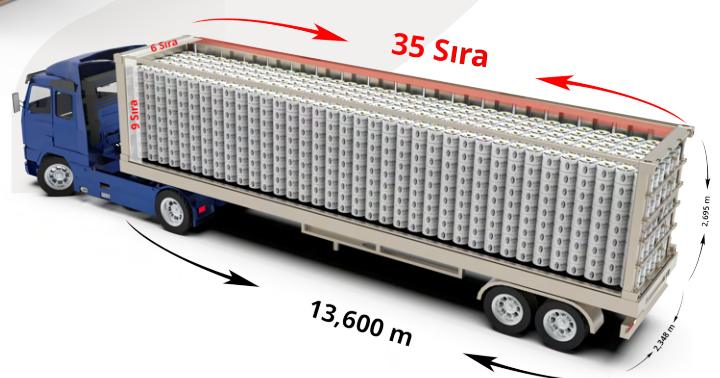
**31 x 54 = 1.674 Boru**



**48 x 36 = 1.728 Boru**



**35 x 54 = 1.890 Boru**



**= 72 Rulo**



**= 36 Rulo**







# irritime

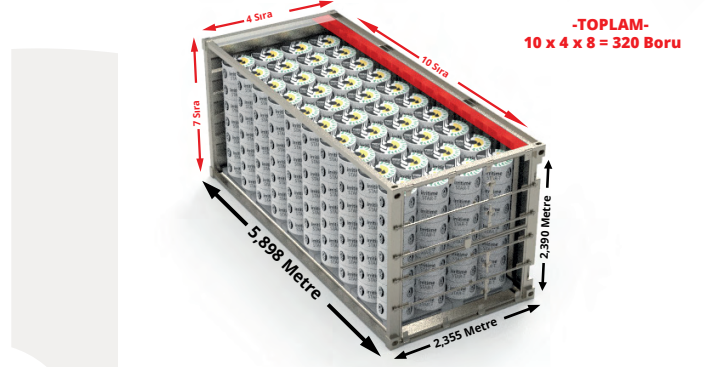
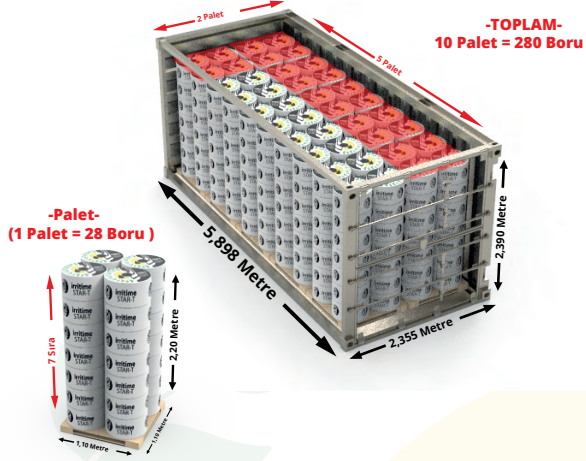
## YÜKLEME PLANI

### STAR-T MAXI YÜKLEME PLANI

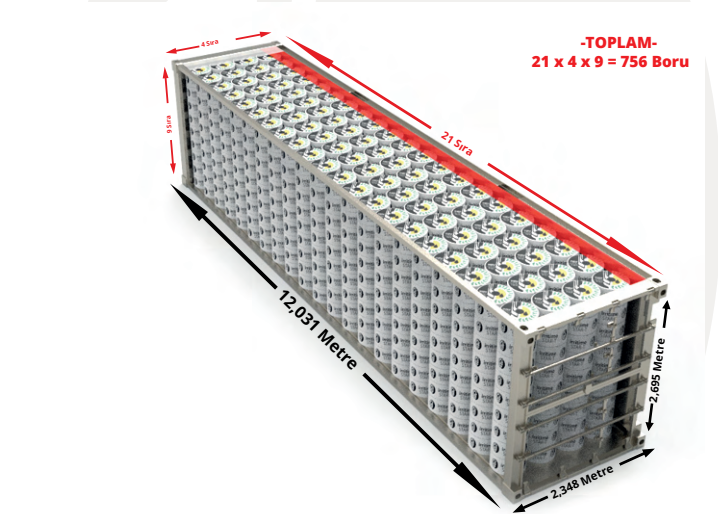
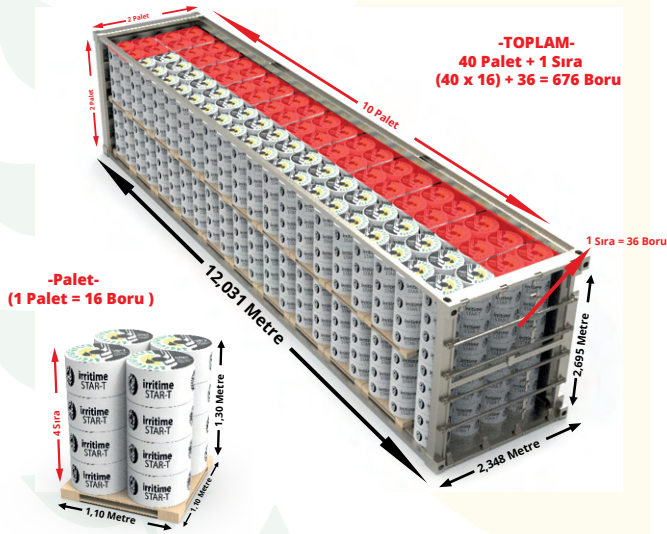
#### PALETLİ

#### 20" DC KONTEYNER

#### PALETSİZ



#### 40" HC KONTEYNER



#### TIR

