

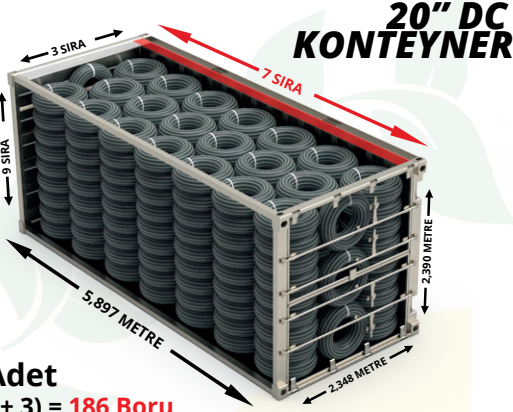


irritime

YÜKLEME PLANI

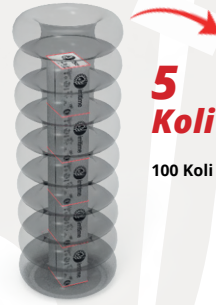
STAR-R
16 MM

16 MM BORU YÜKLEME PLANLARI



20'' DC
KONTEYNER

Toplam Adet
 $(20 \times 9) + (3 + 3) = 186$ Boru
 $186 \times 400 = 74.400$ METRE



5
Koli
100 Koli



7
Boru
STAR-T
IRRITIME STAR-T Pipe
Midi Type Boru
Mini Type Boru
140 Boru



6
Koli
246 Koli



8
Boru
STAR-T
IRRITIME STAR-T Pipe
Midi Type Boru
Mini Type Boru
328 Boru



40'' HC
KONTEYNER

Toplam Adet
 $(41 \times 10) + (3 + 3) = 416$ Boru
 $416 \times 400 = 166.400$ METRE



TIR

Toplam Adet
 $48 \times 10 = 480$ Boru
 $480 \times 400 = 192.000$ METRE



6
Koli
288 Koli



9
Boru
STAR-T
IRRITIME STAR-T Pipe
Midi Type Boru
Mini Type Boru
432 Boru





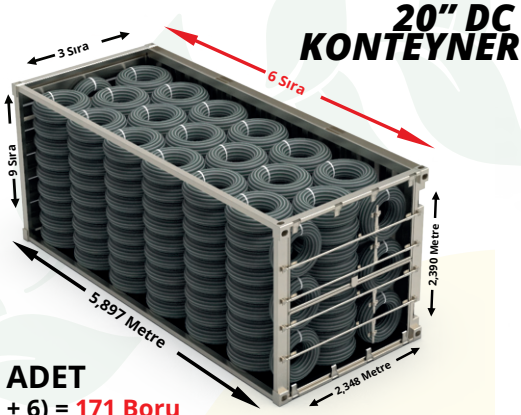
irritime

YÜKLEME PLANI

STAR-R

20 MM

20 MM YÜKLEME PLANI



20'' DC
KONTEYNER

TOPLAM ADET
(18 x 9) + (3 + 6) = **171 Boru**
171 x 300 = **51.300 Metre**



5 Koli

90 Koli



7 Boru
STAR-T

IRRITIME STAR-T Boru
Midi Tip Boru
Mini Tip Boru
126 Boru



10 Koli

234 Koli



8 Boru
STAR-T

IRRITIME STAR-T Boru
Midi Tip Boru
Mini Tip Boru
312 Boru



40'' HC
KONTEYNER

TOPLAM ADET
(39 x 10) + (3 + 9) = **402 Boru**
402 x 300 = **120.600 Metre**



TIR

TOPLAM ADET
(45 x 10) + (3 + 6) = **459 Boru**
459 x 300 = **137.700 Metre**



6 Koli

270 Koli



9 Boru
STAR-T

IRRITIME STAR-T Boru
Midi Tip Boru
Mini Tip Boru
405 Boru

