



# irritime

## PROGRAMA DE CARGA

### STAR-T mini MIDI

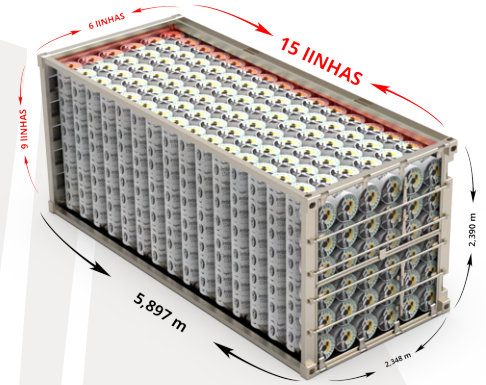
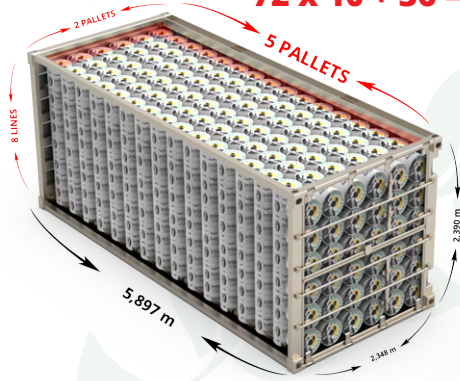
## PROGRAMA DE CARGA

#### COM PALLET

#### SEM PALLET

**72 x 10 + 36 = 756 Rolos**

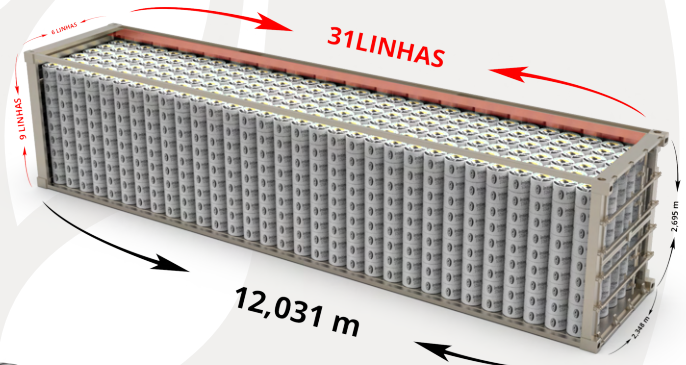
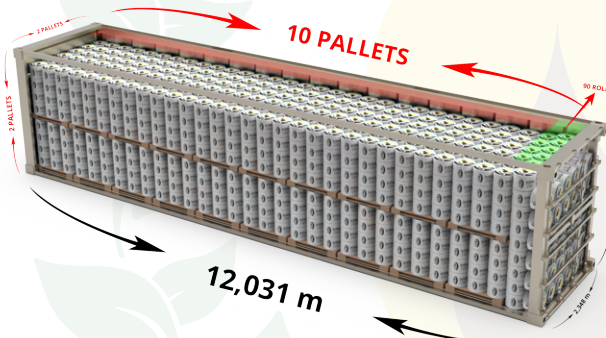
**54 x 15 = 810 Rolos**



**= 72 Rolos**

**36 x 40 + 90 = 3.690 Rolos**

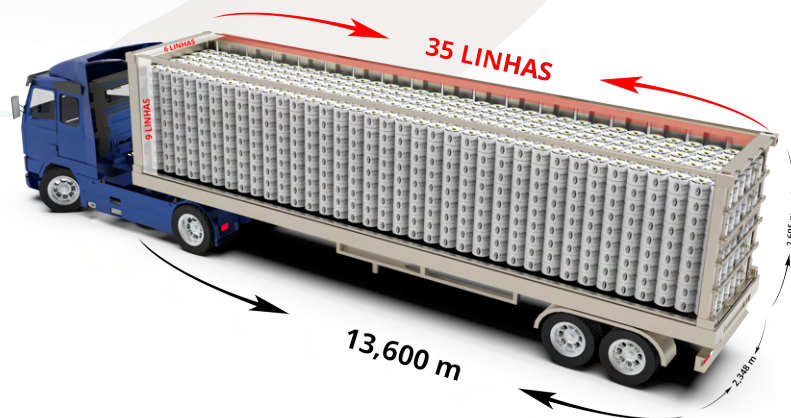
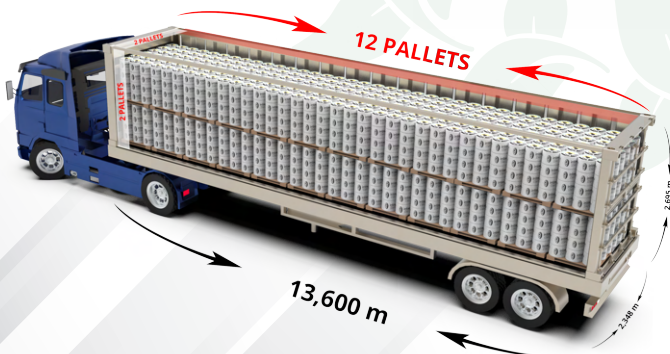
**31 x 54 = 1.674 Rolos**



**= 36 Rolos**

**48 x 36 = 1.728 Rolos**

**35 x 54 = 1.890 Rolos**





# irritime

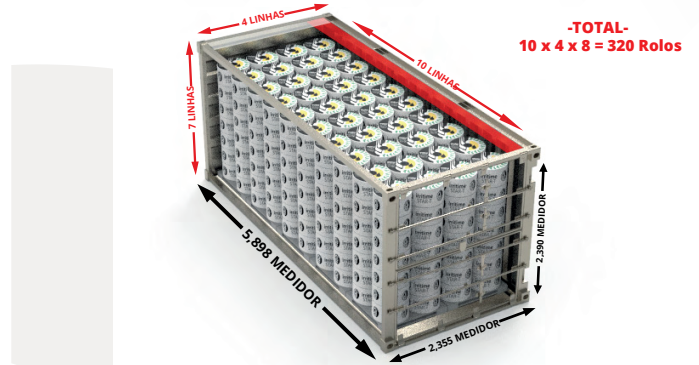
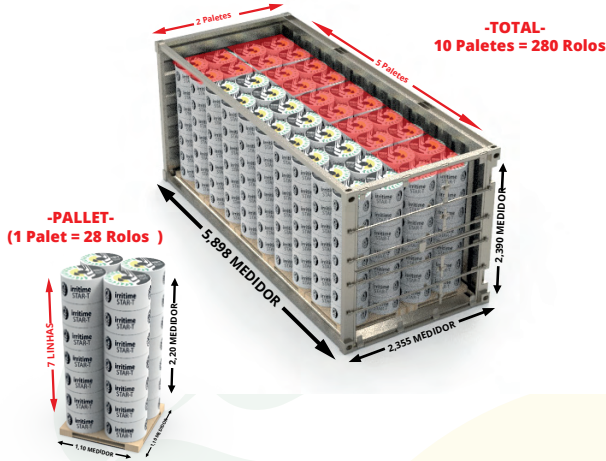
## PROGRAMA DE CARGA

### STAR-T MAXI PLANO DE CARGA

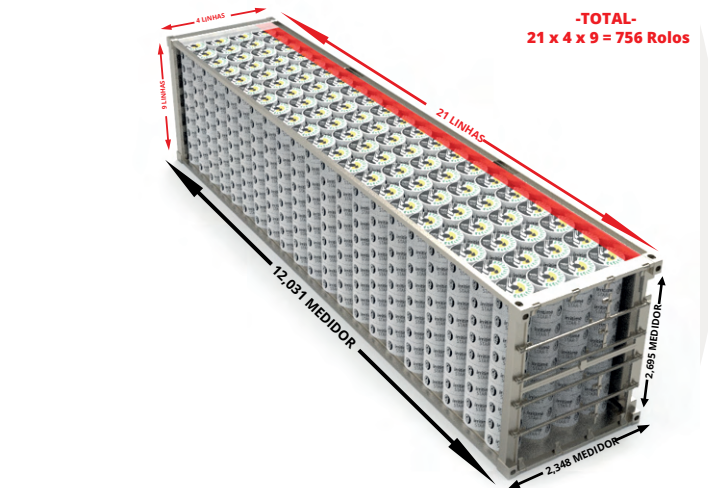
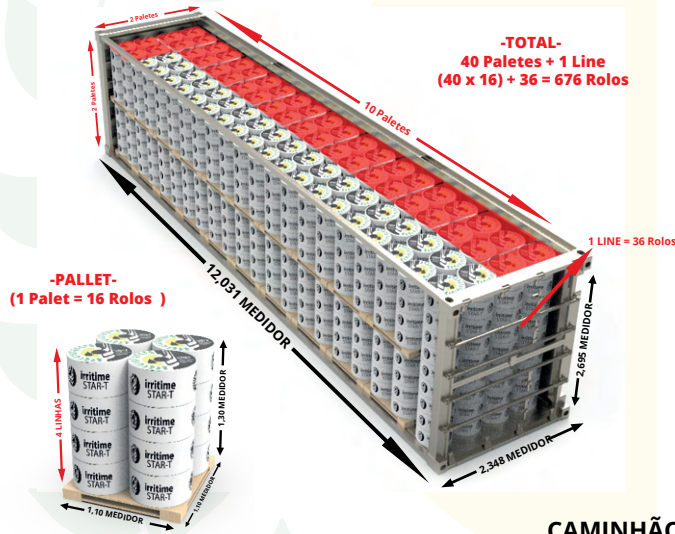
#### COM PALLET

#### 20" DC CONTAINER

#### SEM PALLET



#### 40" HIGH CUBE CONTAINER



#### CAMINHÃO PROGRAMA DE CARGA

