



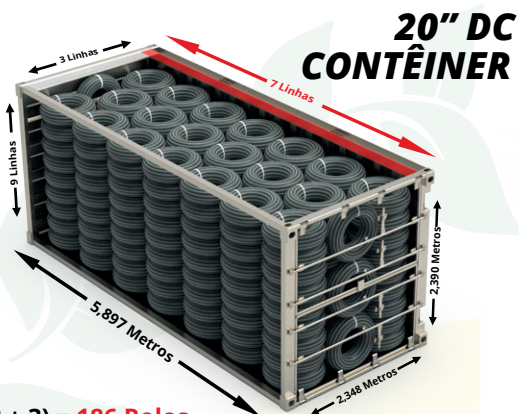
irritime

PLANO DE CARGA

STAR-R

16 MM

PLANO DE CARGA DE 16 MM



20'' DC
CONTÊNER

TOTAIS

$(20 \times 9) + (3 + 3) = 186$ Rolos
 $186 \times 400 = 74.400$ Metros



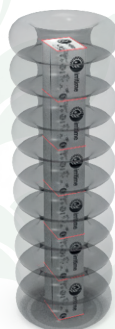
5
PARCELA

100 PARCELA



7
Rolos
STAR-T

IRRITIME STAR-T Rolos
Midi Type Rolos
Mini Type Rolos
140 Rolos



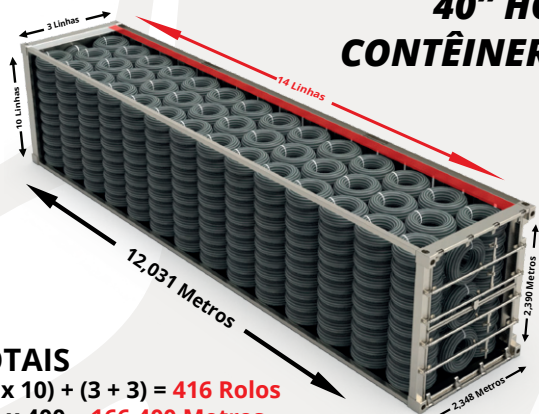
6
PARCELA

246 PARCELA



8
Rolos
STAR-T

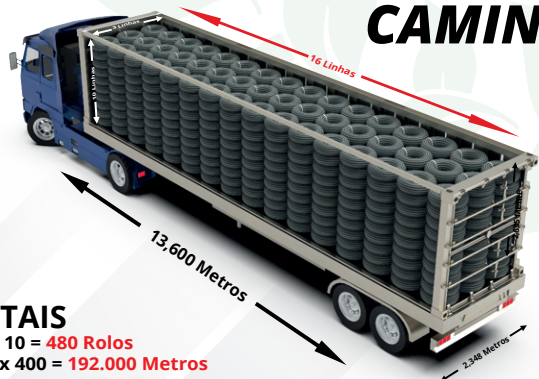
IRRITIME STAR-T Rolos
Midi Type Rolos
Mini Type Rolos
328 Rolos



40'' HC
CONTÊNER

TOTAIS

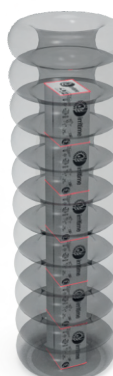
$(41 \times 10) + (3 + 3) = 416$ Rolos
 $416 \times 400 = 166.400$ Metros



CAMINHÃO

TOTAIS

$48 \times 10 = 480$ Rolos
 $480 \times 400 = 192.000$ Metros



6
PARCELA

288 PARCELA



9
Rolos
STAR-T

IRRITIME STAR-T Rolos
Midi Type Rolos
Mini Type Rolos
432 Rolos





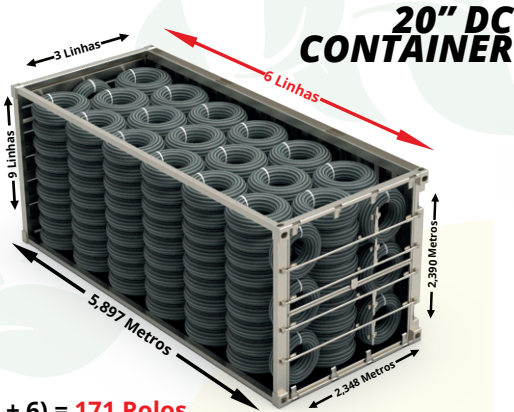
irritime

PLANO DE CARGA

STAR-R

20 MM

PLANO DE CARGA DE 20 MM



TOTAIS

$(18 \times 9) + (3 + 6) = 171$ Rolos
 $171 \times 300 = 51.300$ Metros



5
PARCELA

90 Parcela



7
Rolos
STAR-T

IRRITIME STAR-T Rolos
Midi Tip Rolos
Mini Tip Rolos
126 Rolos



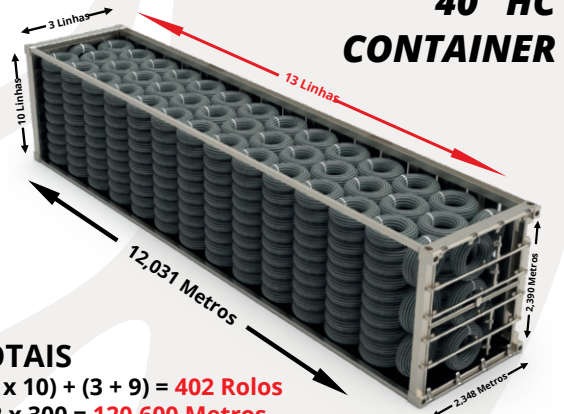
6
Parcela

234 Parcela



8
Rolos
STAR-T

IRRITIME STAR-T Rolos
Midi Tip Rolos
Mini Tip Rolos
312 Rolos



40'' HC CONTAINER

TOTAIS

$(39 \times 10) + (3 + 9) = 402$ Rolos
 $402 \times 300 = 120.600$ Metros



TOTAIS

$(45 \times 10) + (3 + 6) = 459$ Rolos
 $459 \times 300 = 137.700$ Metros



6
Parcela

270 Parcela



9
Rolos
STAR-T

IRRITIME STAR-T Rolos
Midi Tip Rolos
Mini Tip Rolos
405 Rolos

