



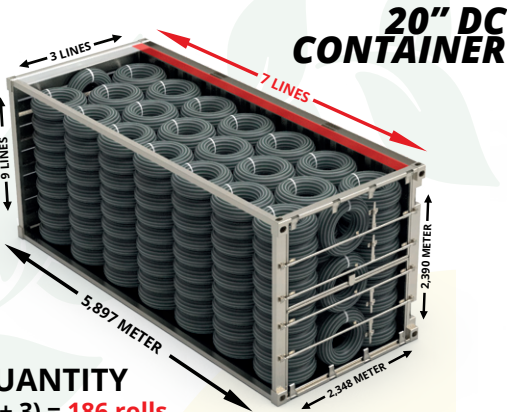
irritime

LOADING PLANS

STAR-R

16 MM

# 16 MM PIPES LOADING PLANS



20" DC CONTAINER

**TOTAL QUANTITY**  
 $(20 \times 9) + (3 + 3) = 186$  rolls  
 $186 \times 400 = 74.400$  meters



**5 BOXES**

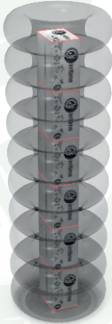
100 boxes can fit in 20" DC Container.



**7 ROLLS STAR-T**

IRRITIME STAR-T Pipe  
Midi Type Rolls  
Mini Type Rolls

140 rolls can fit in 20" DC Container.



**6 BOXES**

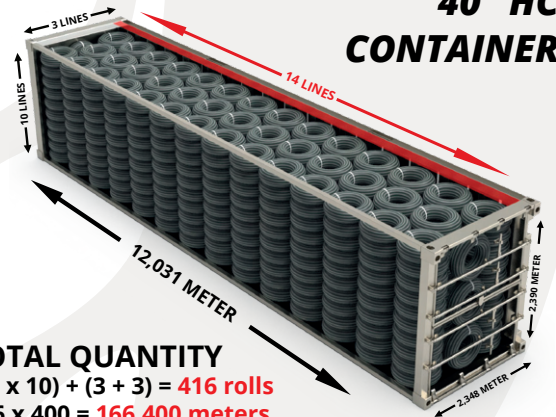
246 boxes can fit in 40" HC Container.



**8 ROLLS STAR-T**

IRRITIME STAR-T Pipe  
Midi Type Rolls  
Mini Type Rolls

328 rolls can fit in 40" HC Container.



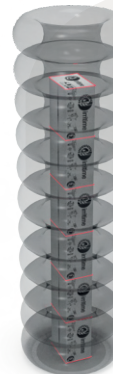
40" HC CONTAINER

**TOTAL QUANTITY**  
 $(41 \times 10) + (3 + 3) = 416$  rolls  
 $416 \times 400 = 166.400$  meters



TRUCK

**TOTAL QUANTITY**  
 $48 \times 10 = 480$  rolls  
 $480 \times 400 = 192.000$  meters



**6 BOXES**

288 boxes can fit in Truck



**9 ROLLS STAR-T**

IRRITIME STAR-T Pipe  
Midi Type Rolls  
Mini Type Rolls

432 rolls can fit in Truck





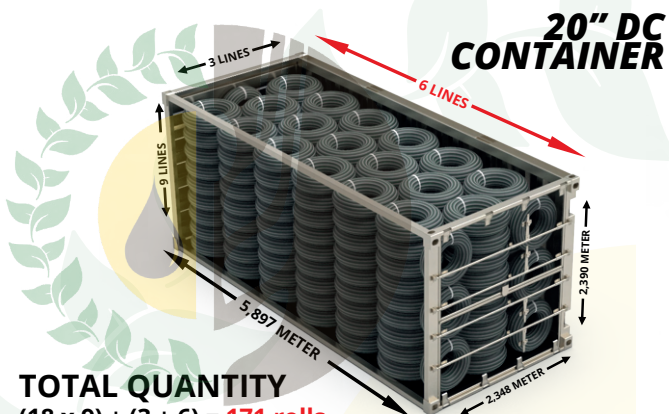
# irritime

# LOADING PLAN

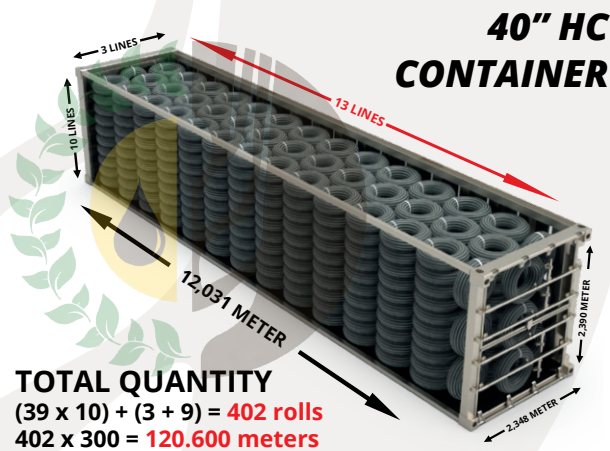
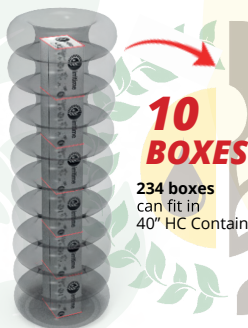
## STAR-R

20 MM

### 20 MM PIPES LOADING PLANS



**TOTAL QUANTITY**  
 $(18 \times 9) + (3 \times 6) = 171$  rolls  
 $171 \times 300 = 51.300$  meters



**TOTAL QUANTITY**  
 $(39 \times 10) + (3 \times 9) = 402$  rolls  
 $402 \times 300 = 120.600$  meters



**TOTAL QUANTITY**  
 $(45 \times 10) + (3 \times 6) = 459$  rolls  
 $459 \times 300 = 137.700$  meters

