



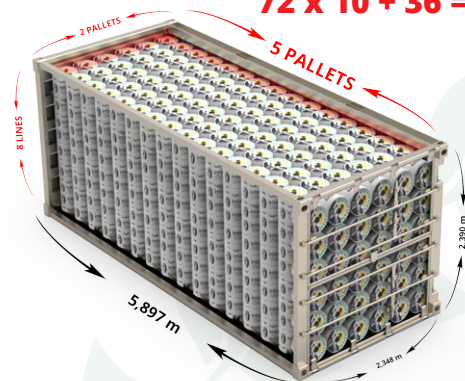
irritime

LOADING PLAN

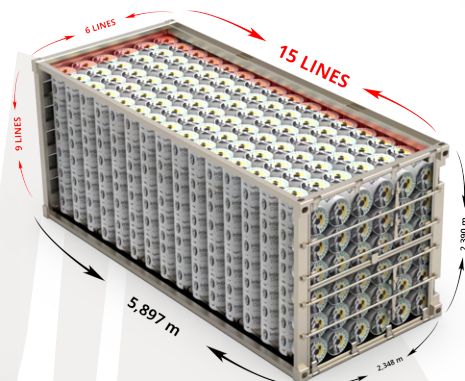
STAR-T mini MIDI LOADING PROGRAM

WITHOUT PALLET

72 x 10 + 36 = 756 Rolls



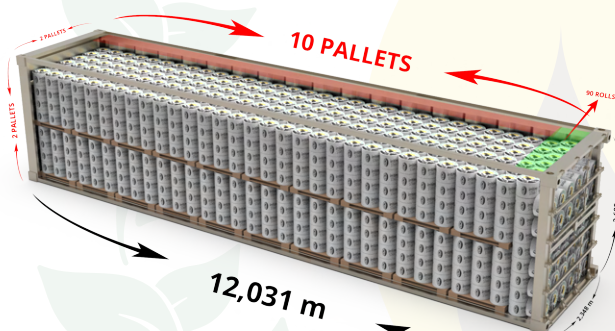
54 x 15 = 810 Rolls



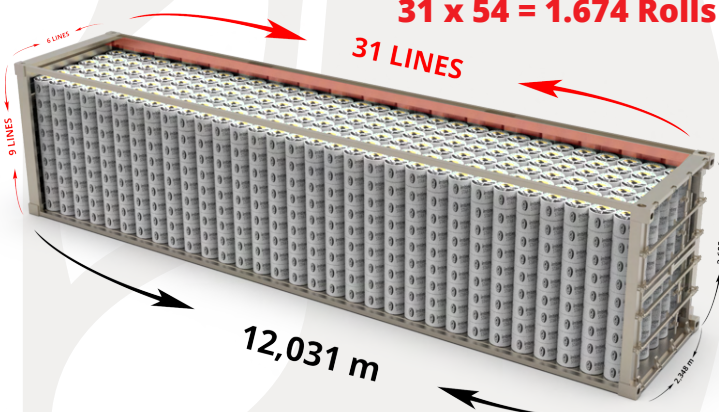
= 72 Rolls



36 x 40 + 90 = 3.690 Rolls



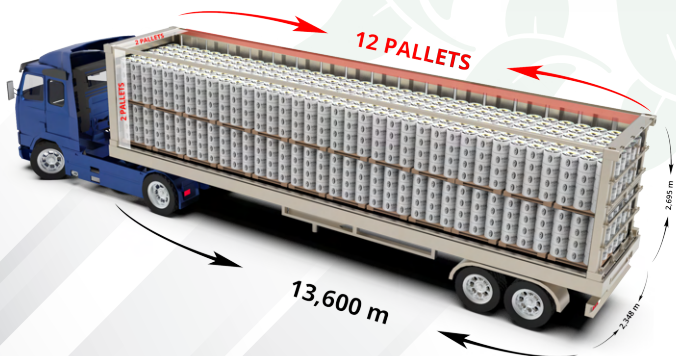
31 x 54 = 1.674 Rolls



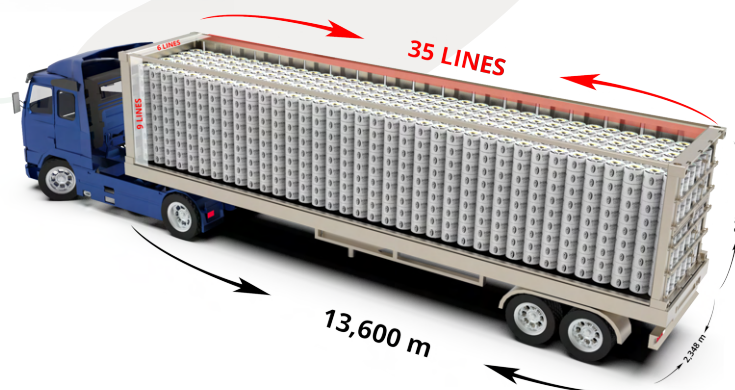
= 36 Rolls



48 x 36 = 1.728 Rolls



35 x 54 = 1.890 Rolls





irritime

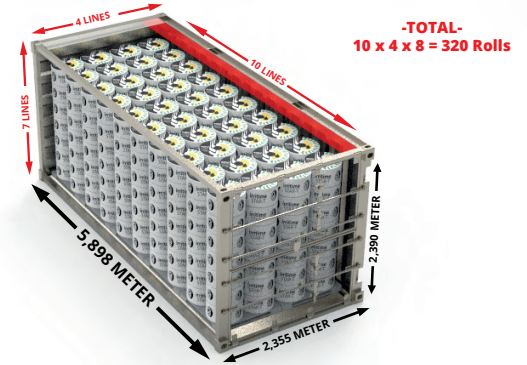
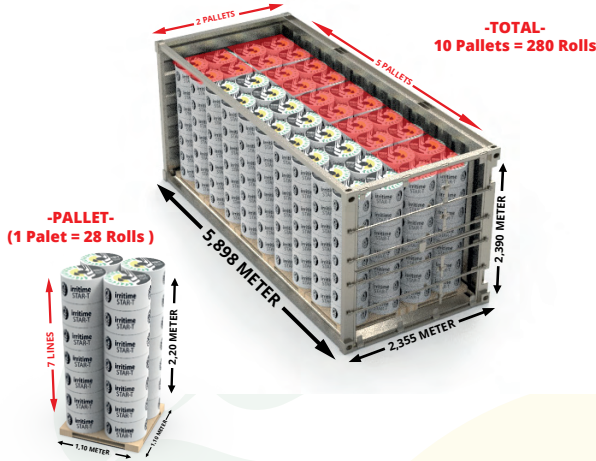
LOADING PLAN

STAR-T MAXI LOADING PROGRAM

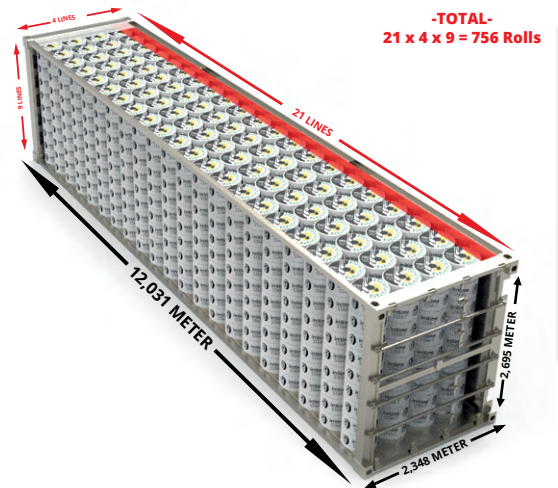
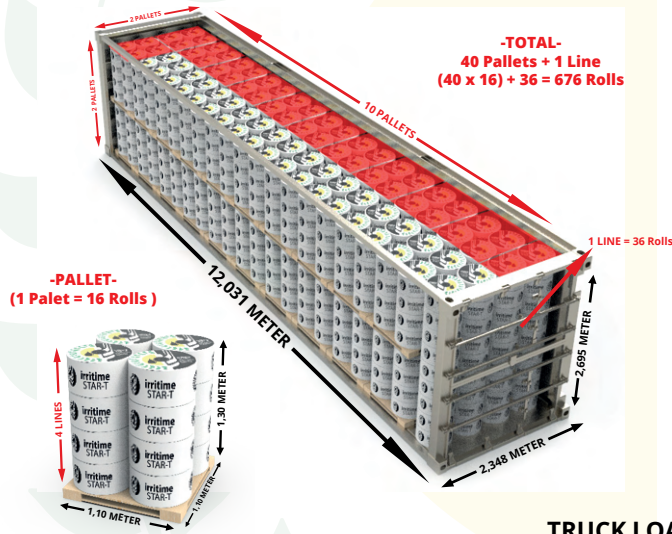
WITH PALLET

20" DC CONTAINER

WITHOUT PALLET



40" HIGH CUBE CONTAINER



TRUCK LOADING PROGRAM

